

Northeast Maine Workforce Conditions & Trends



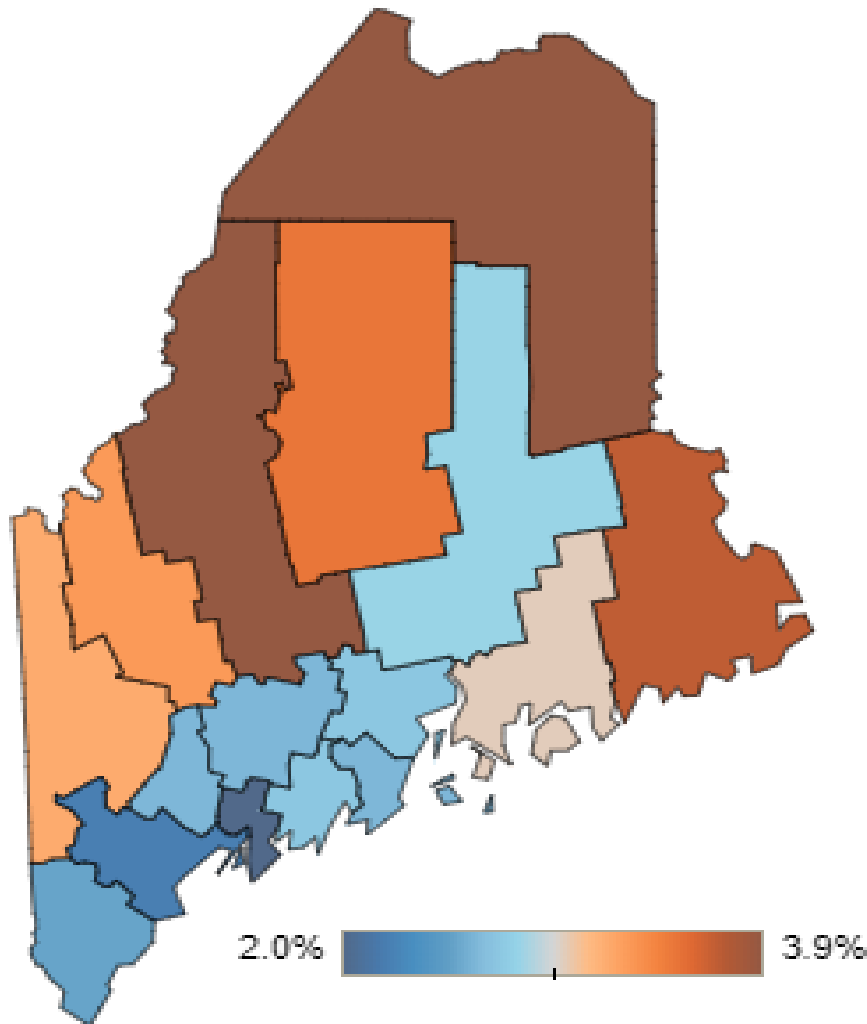
MAINE
DEPARTMENT OF
LABOR
*Center for Workforce
Research and Information*

Glenn Mills
Chief Economist
Center for Workforce Research
Maine Department of Labor
www.maine.gov/labor/cwri
glenn.mills@maine.gov
207-621-5192

Unemployment is historically low throughout the state, but higher than the statewide average in the northeast

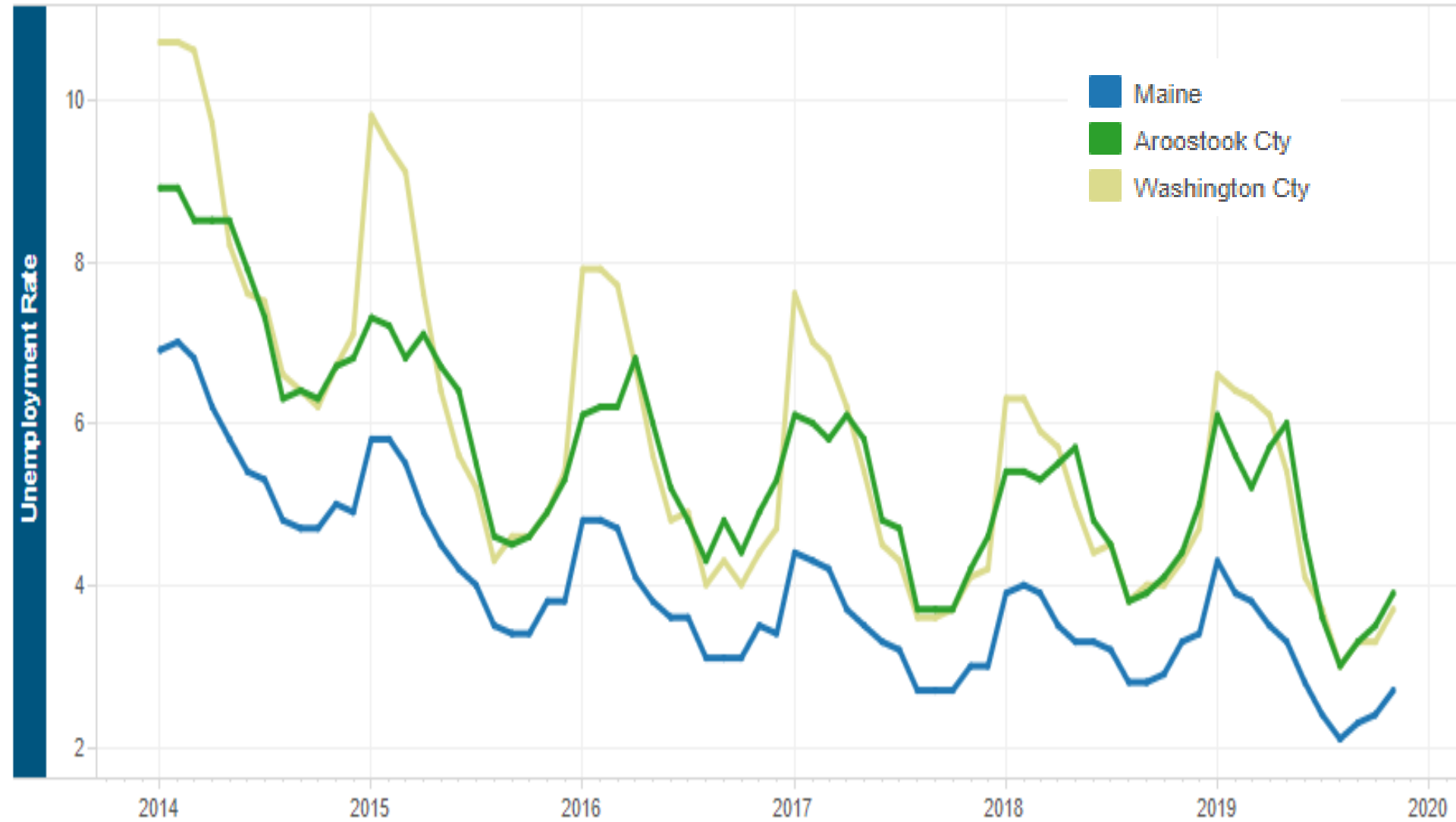
(November 2019 Not Seasonally Adjusted Unemployment Rates)

Unemployment rate

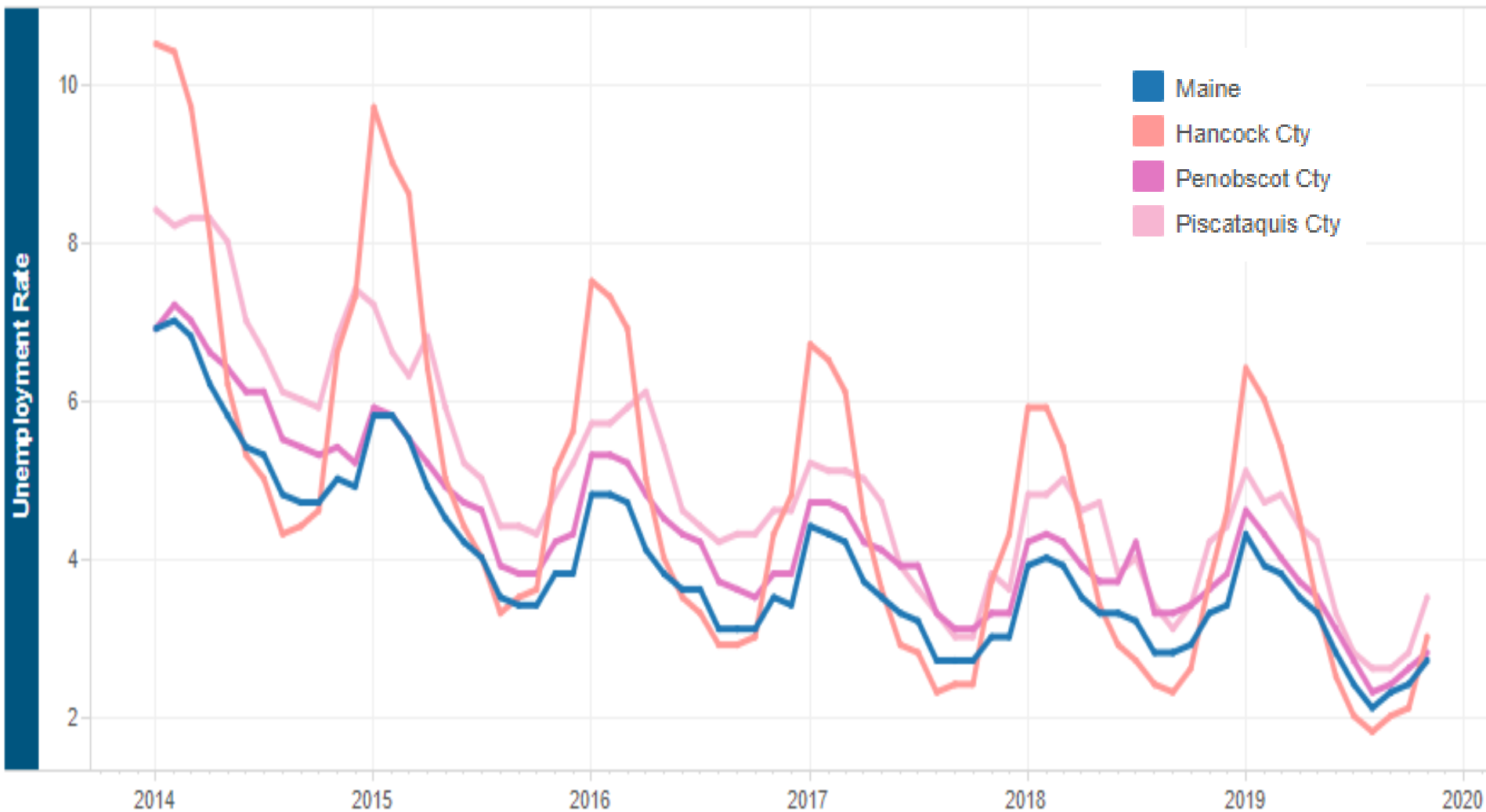


County	Rate
Maine	2.7%
Androscoggin Cty	2.6%
Aroostook Cty	3.9%
Cumberland Cty	2.2%
Franklin Cty	3.3%
Hancock Cty	3.0%
Kennebec Cty	2.6%
Knox Cty	2.6%
Lincoln Cty	2.7%
Oxford Cty	3.2%
Penobscot Cty	2.8%
Piscataquis Cty	3.5%
Sagadahoc Cty	2.0%
Somerset Cty	3.9%
Waldo Cty	2.7%
Washington Cty	3.7%
York Cty	2.5%

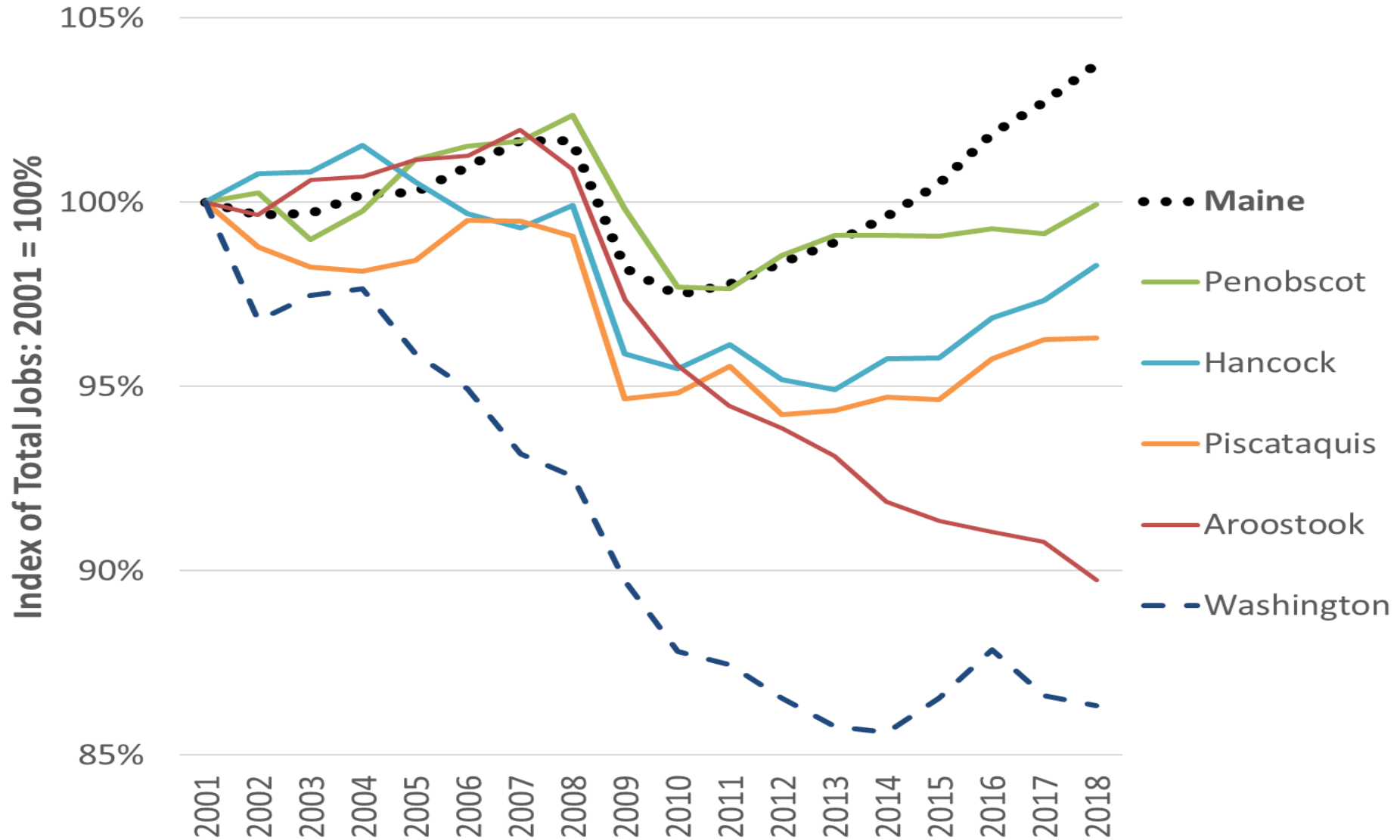
Unemployment rates are higher than the statewide average throughout the year in Aroostook and Washington counties, and seasonal swings are larger (*Not seasonally adjusted rates*)



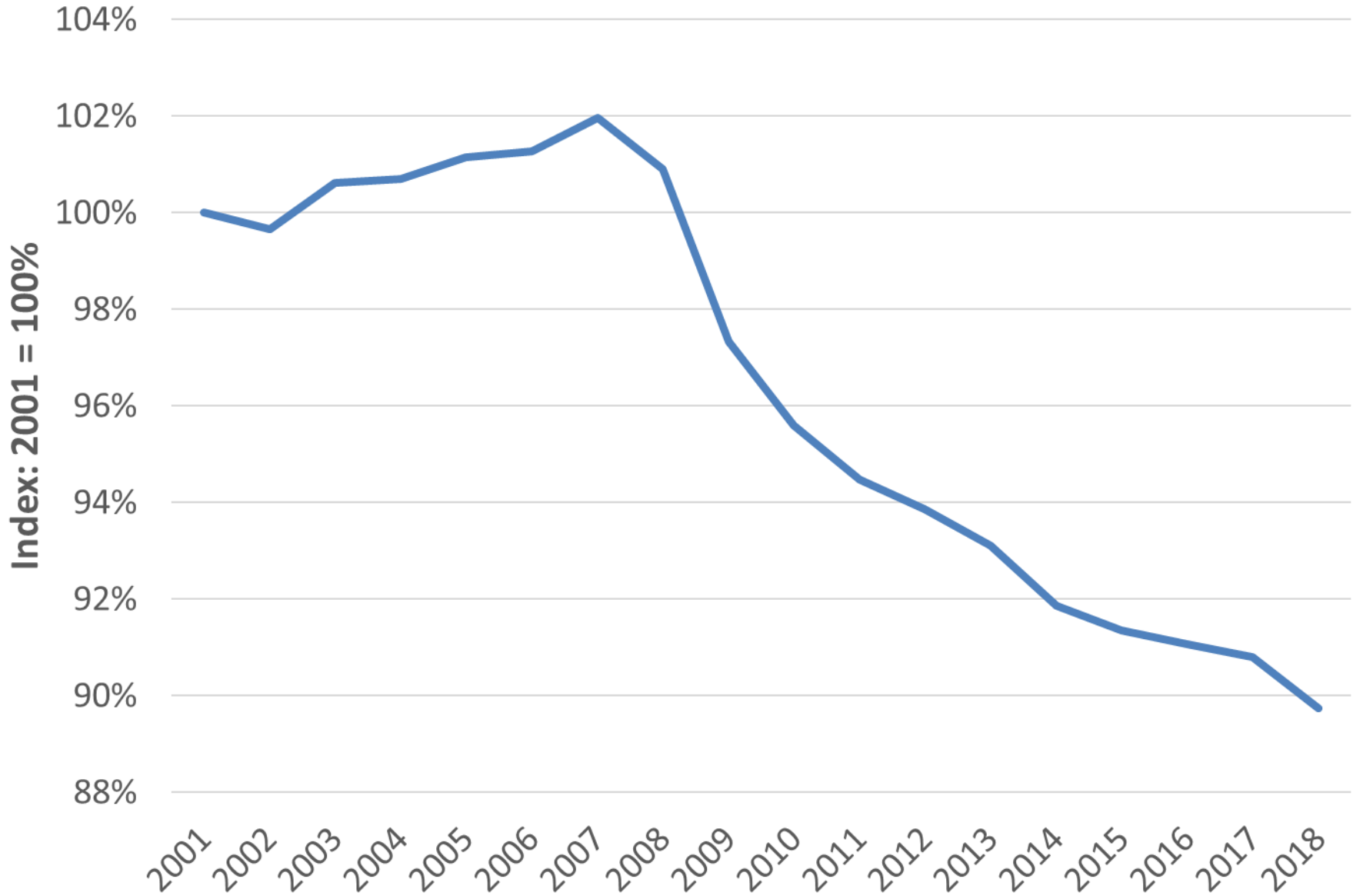
Unemployment rates are higher than the statewide average throughout the year in Piscataquis, close to the average in Penobscot, and high in winter and low in summer in Hancock County. *(Not seasonally adjusted rates)*



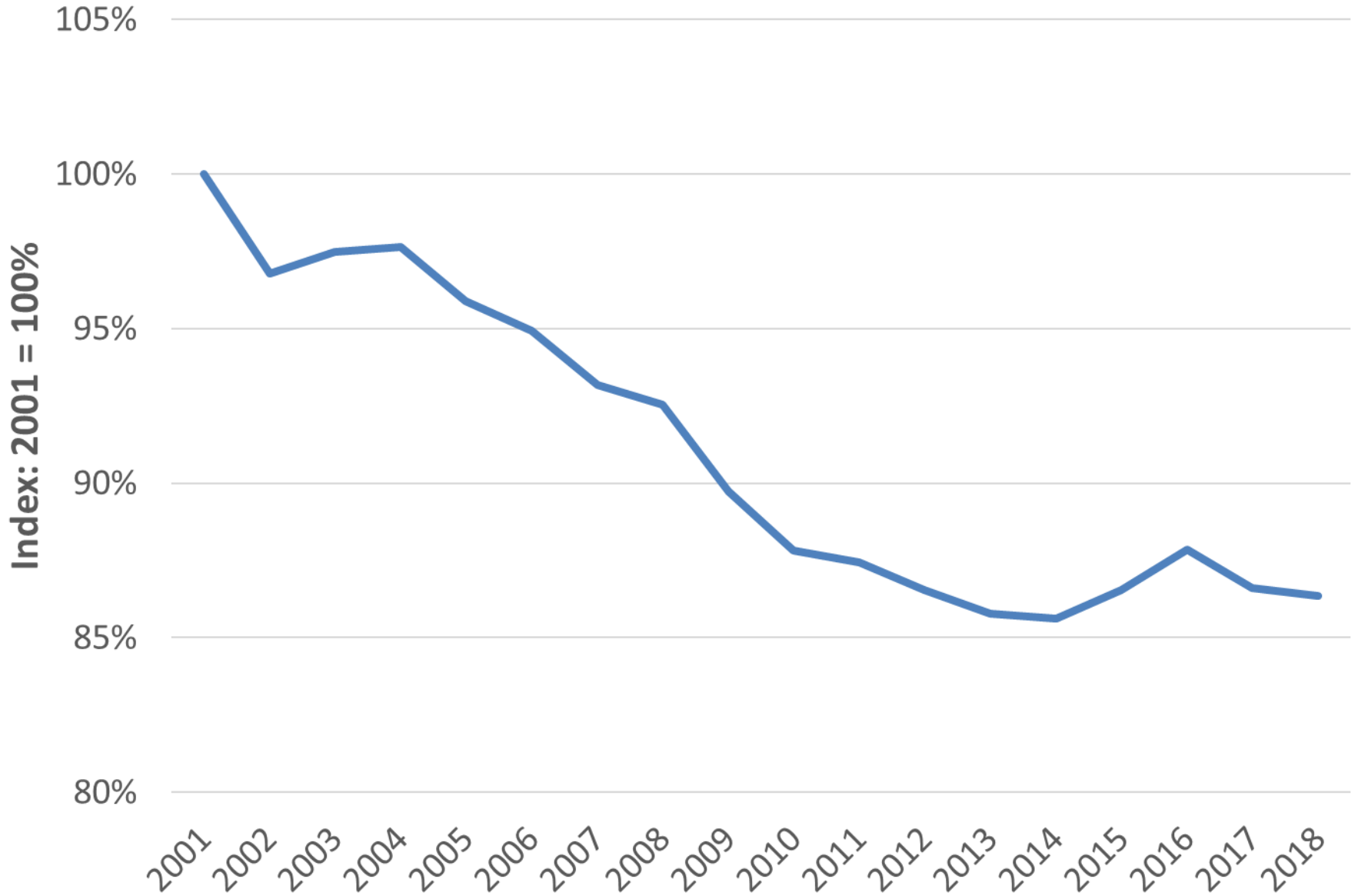
In the northeast region only Penobscot County had as many jobs in 2018 as in 2001. All five counties lagged statewide growth.



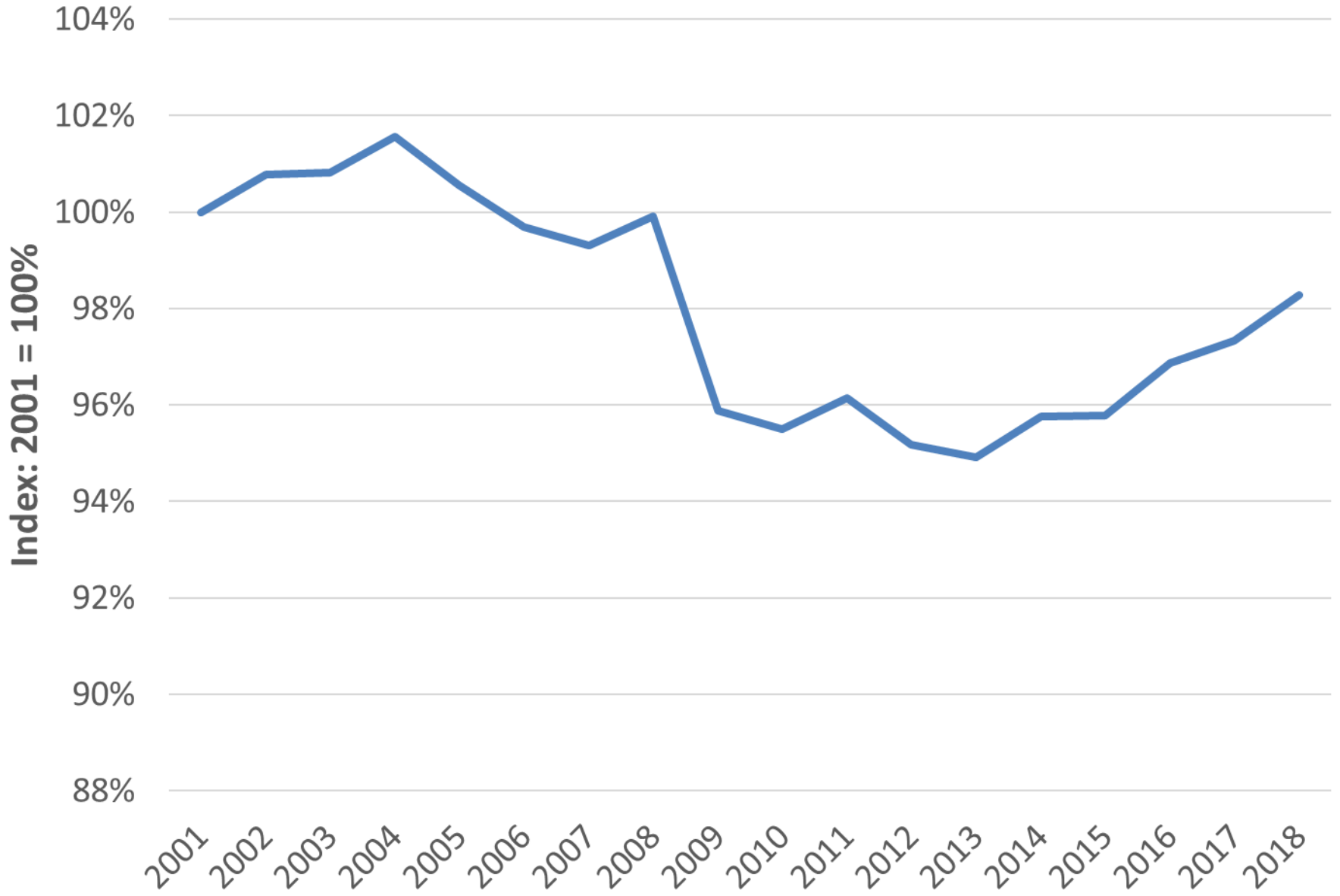
Aroostook



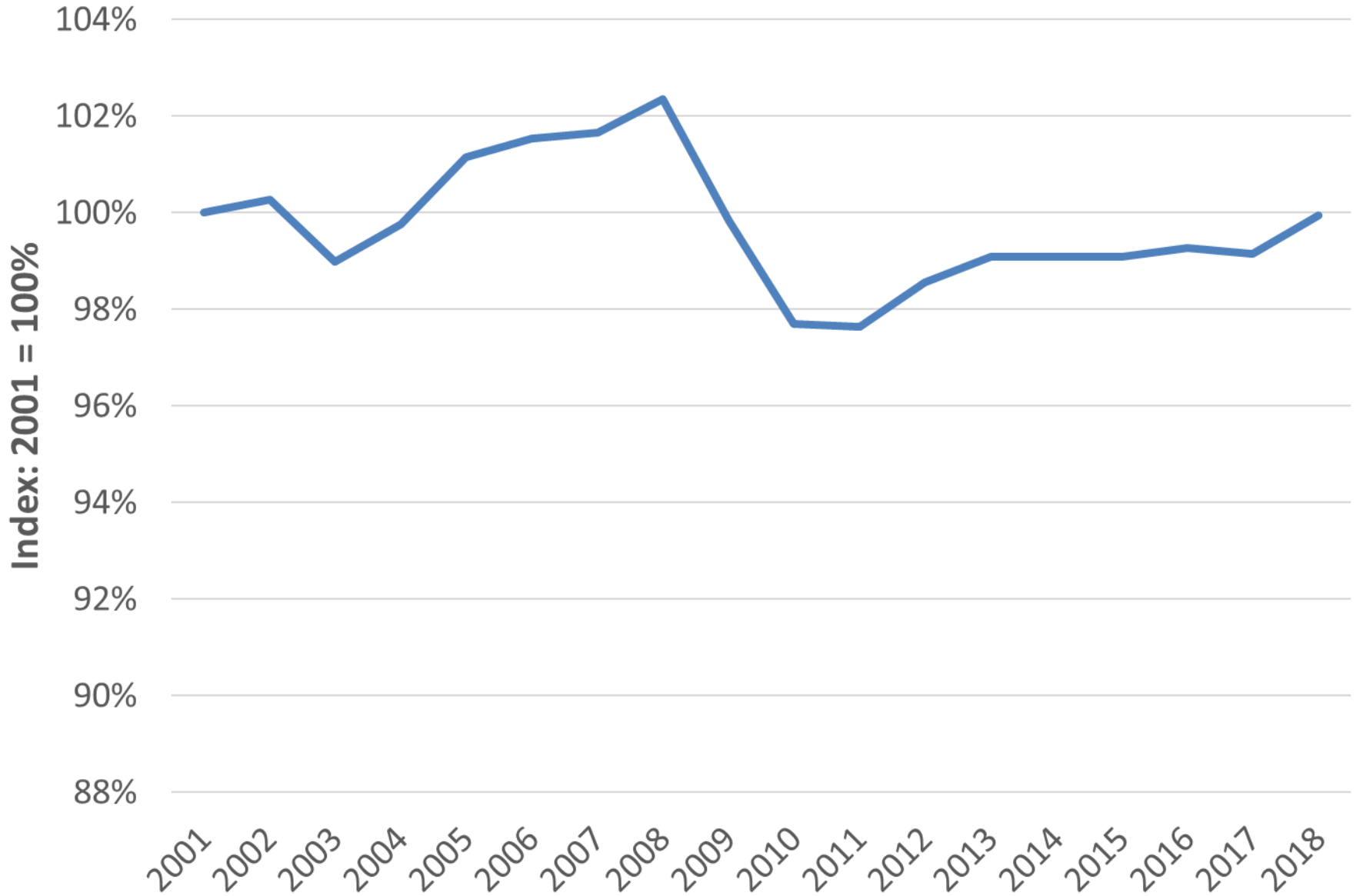
Washington



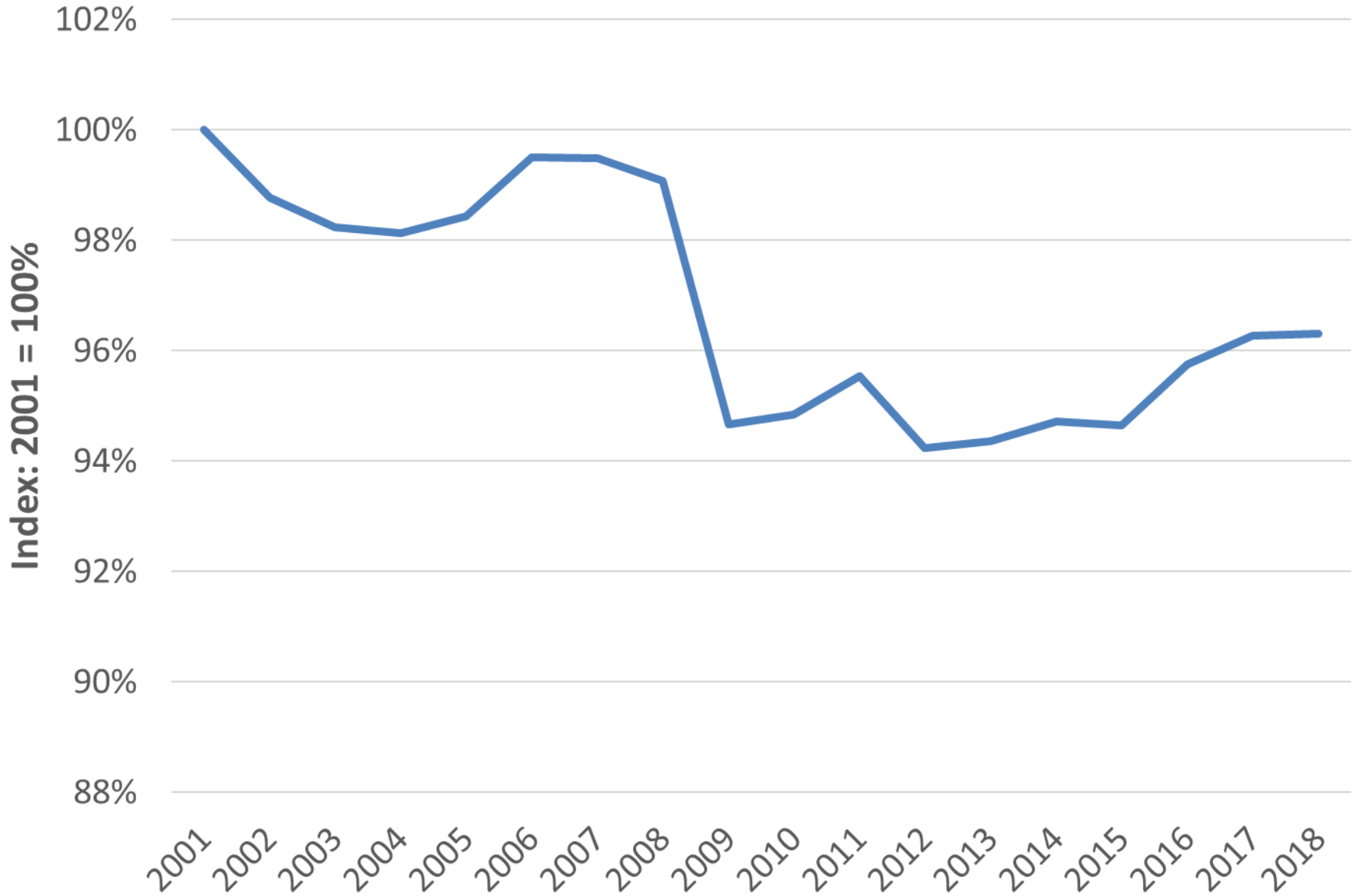
Hancock



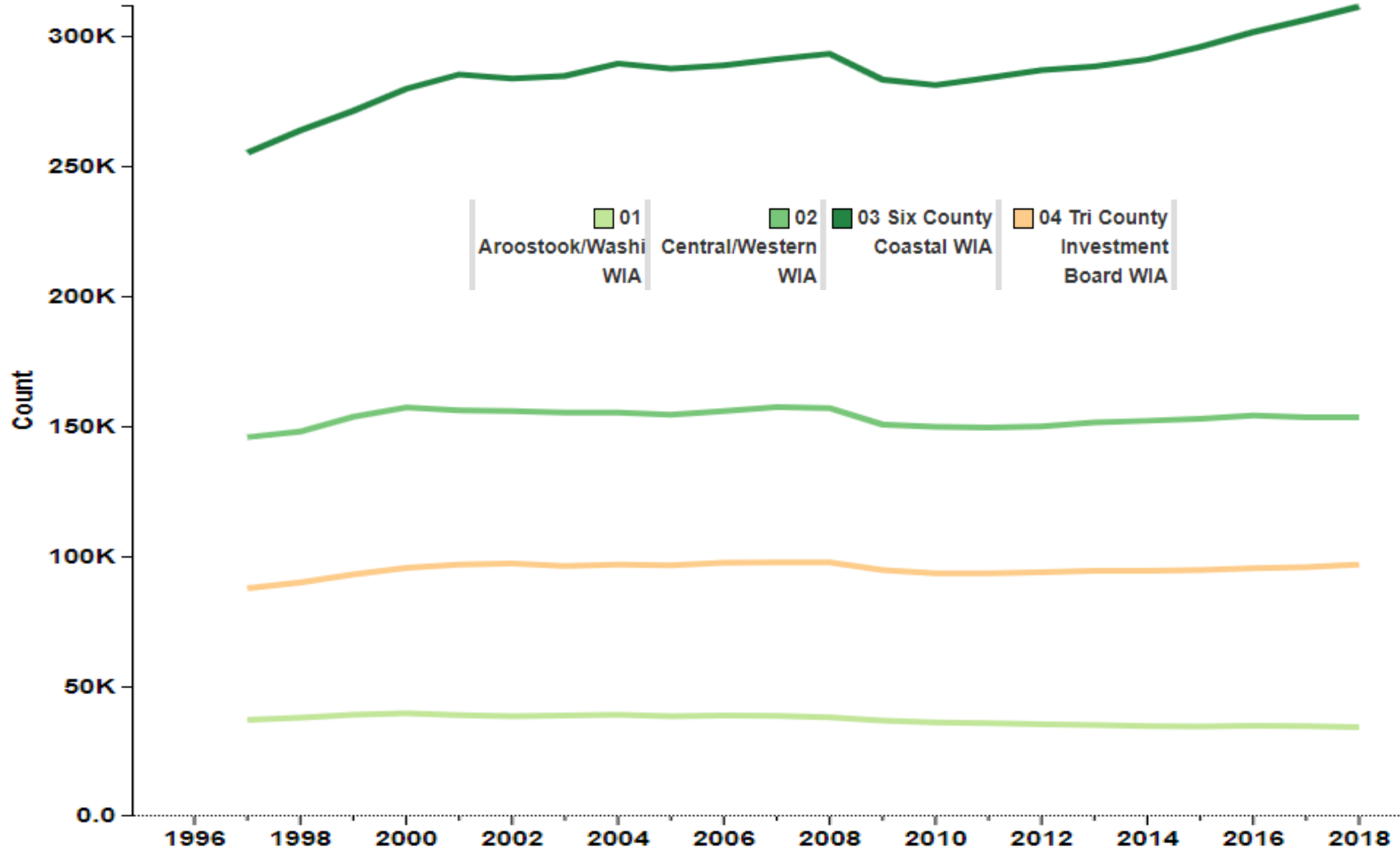
Penobscot



Piscataquis

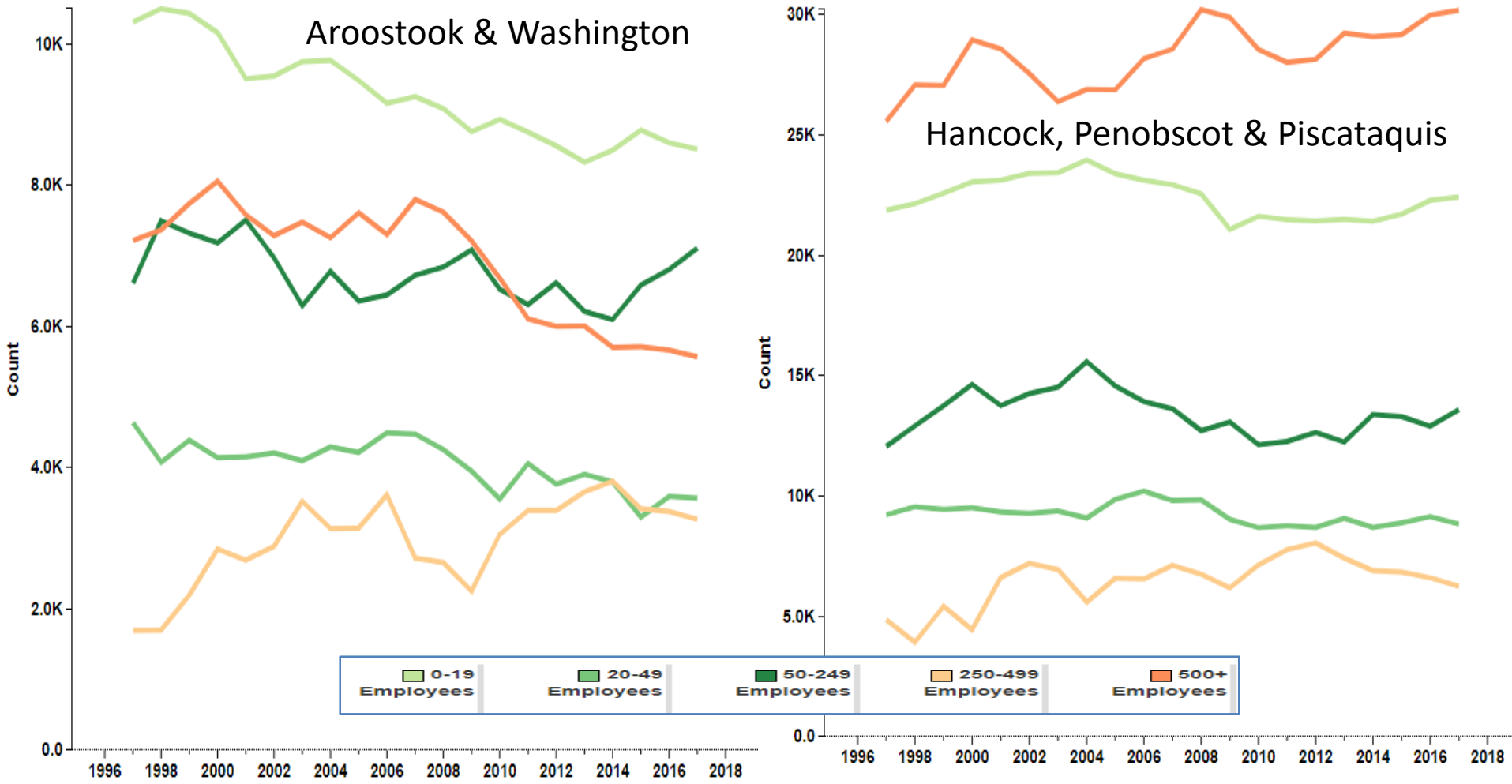


The northeastern region has 22% of jobs in Maine, down from 24% two decades ago

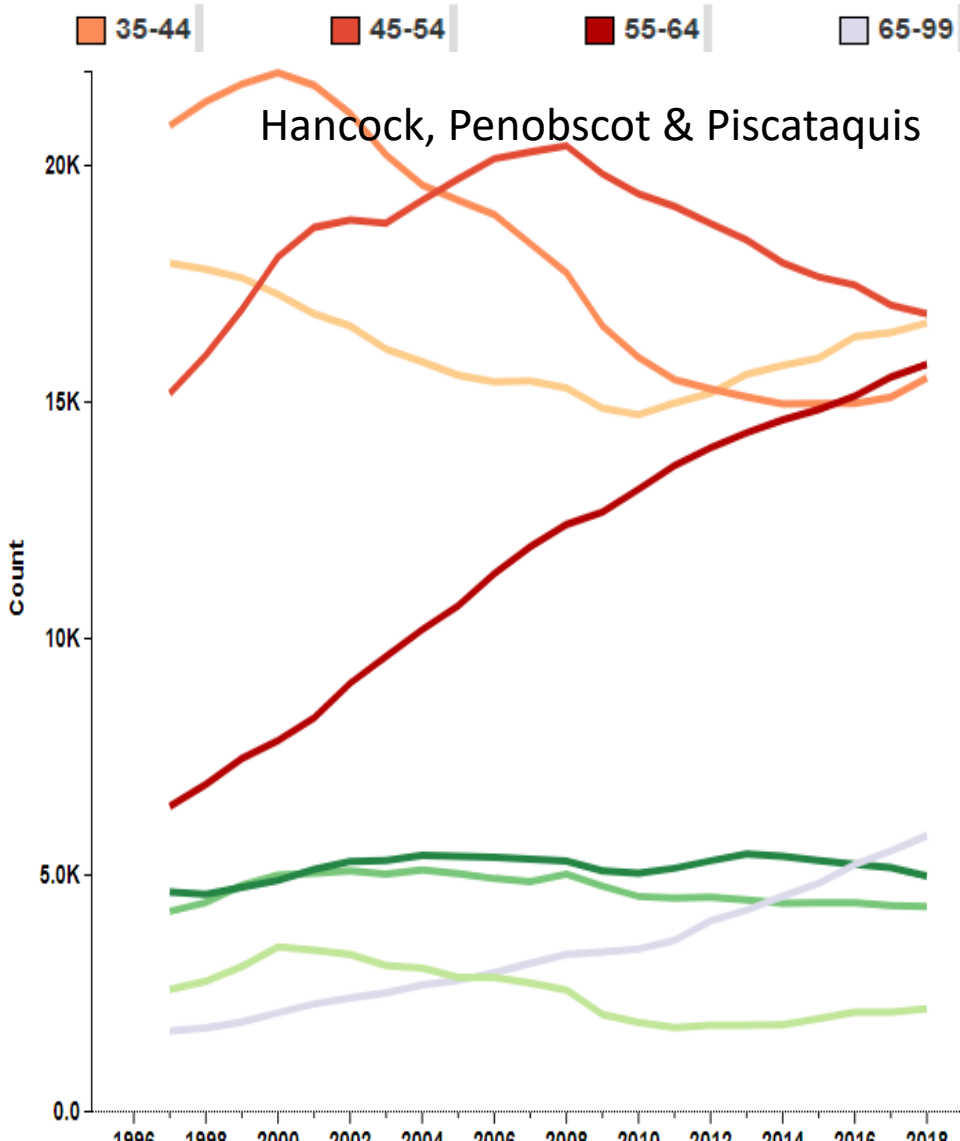
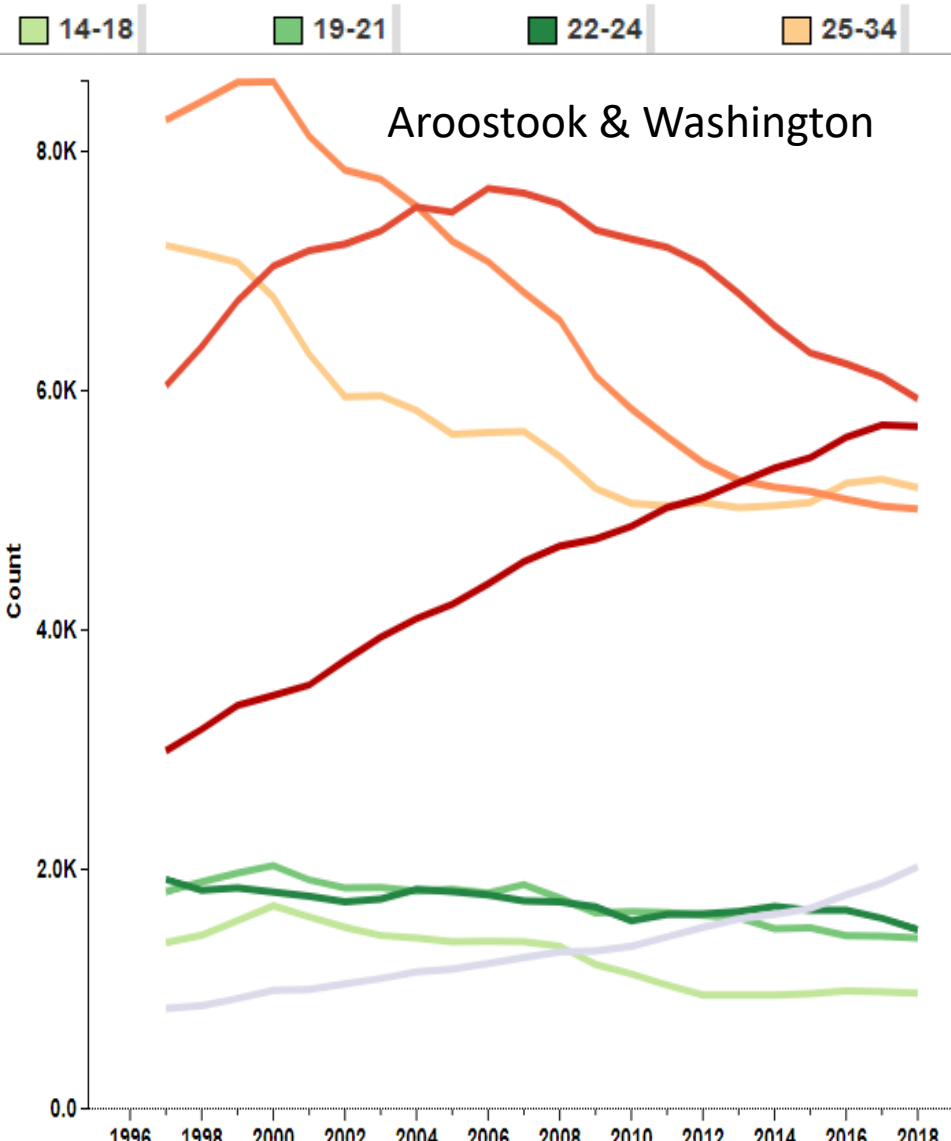


In Aroostook and Washington counties job losses were primarily at very small and large firms; there was job growth in large firms in the southern part of the region

(Many jobs are at locations with small numbers of jobs that are part of a larger firm with locations throughout the state, region, nation or world)



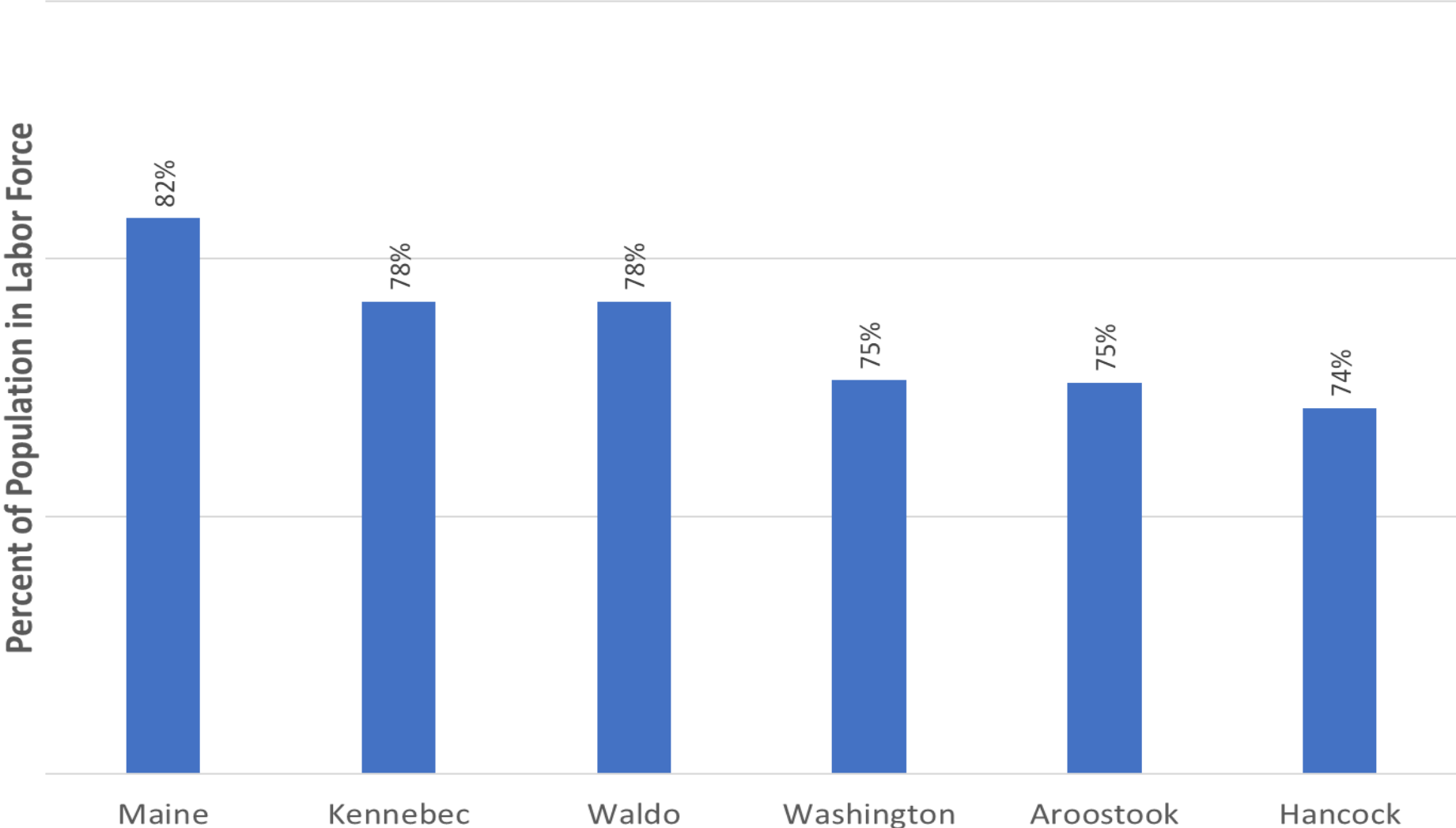
In the northeast region the share of jobs held by people age 55+ has increased sharply, reflecting the advancing age of baby boomers and declining numbers of young people



Labor force participation of people in their 20s is lower than average throughout the region

Labor Force Participation Rate, Age 20 to 29

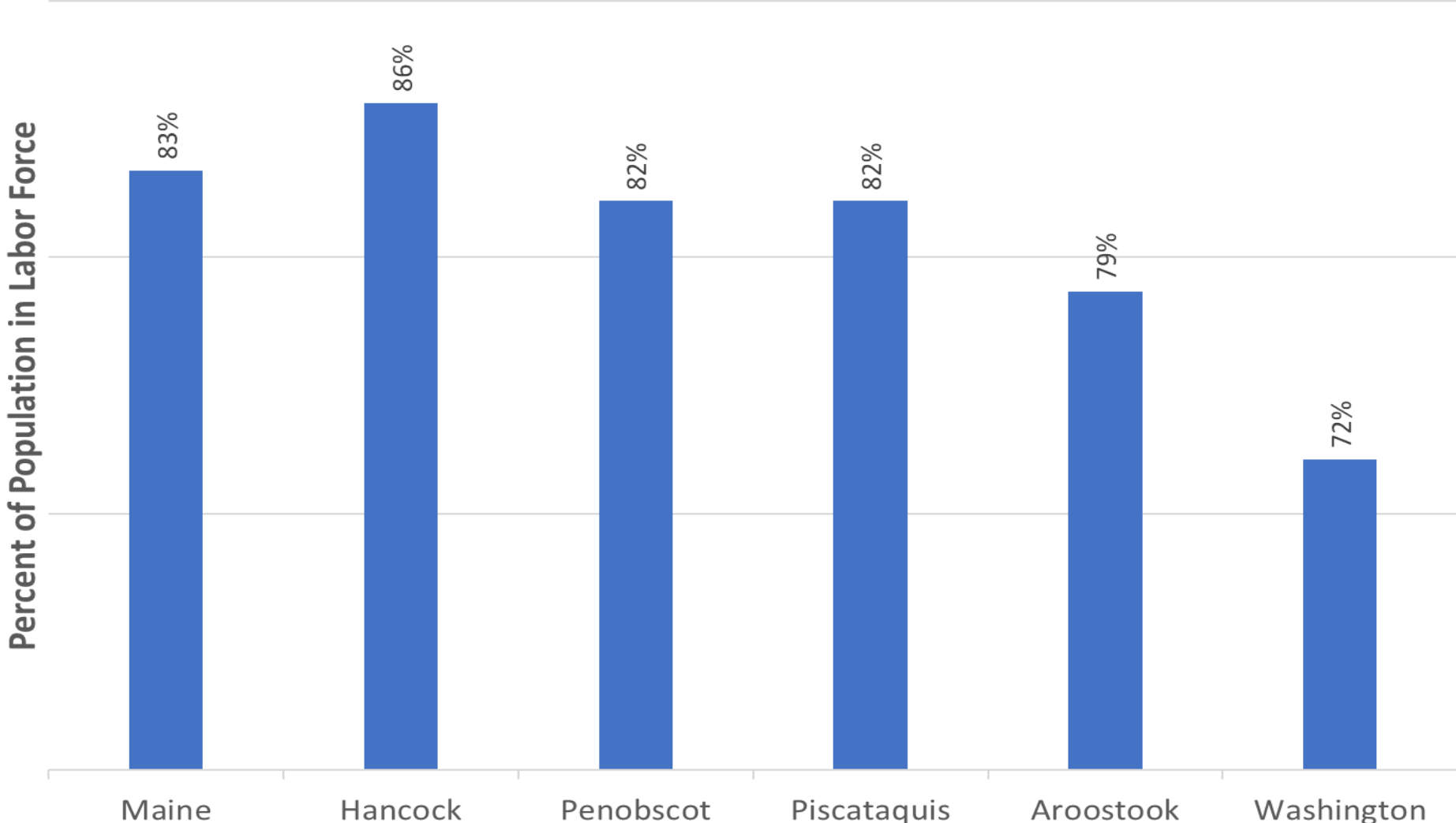
(2013 to 2017 Averages)



Labor force participation of young prime-age adults is close to average in most of the region, except Washington County

Labor Force Participation Rate, Age 30 to 44

(2013 to 2017 Averages)



Labor force participation of more experienced prime-age adults is lower than average in most of the region

Labor Force Participation Rate, Age 45 to 59

(2013 to 2017 Averages)

Percent of Population in Labor Force

